



Safety Briefing



Welcome to Congressman Solomon P. Ortiz International Center
Phone Number: 361-879-0125



Be aware of the emergency exit in your immediate area



Nearest AED is located at the front desk



Be aware of the nearest fire extinguisher



Assembly point is located in the parking lot across the street in front of the center



Please contact event staff member for special assistance

CORPUS CHRISTI SHIP CHANNEL, TEXAS LA QUINTA EXPANSION

Feasibility Study and Environmental Assessment



Initial Scoping Meeting
4 June 2019



**US Army Corps
of Engineers**



MEETING PURPOSE

- NEPA scoping meetings are to obtain public input on potential issues of concern regarding improvements to the La Quinta Ship Channel.
- Brief presentation
- Followed by public comments



FEASIBILITY STUDY BACKGROUND

- USACE, in conjunction with the Port of Corpus Christi Authority, is conducting a feasibility study
- Feasibility Cost Share Agreement was signed in September 2018

NON-FEDERAL SPONSOR



PORT **CORPUS CHRISTI**

Sean Strawbridge, CEO, Port of Corpus Christi
Authority (PCCA)

Dan Koesema, Chief of Channel Development

STUDY AREA



La Quinta Section 1201 (23) of WRDA 2016



PREVIOUS STUDIES

- 2003 Corpus Christi Ship Channel, Texas, Channel Improvement Project, Final Feasibility Report and Final Environmental Impact Statement
- 2006 DA Section 10/404 Permit for the extension of the La Quinta Channel to -41 feet MLLW
- 2012 Corpus Christi Ship Channel, Texas, Deep-Draft Navigation and Ecosystem Restoration Project, Limited Reevaluation Report

CURRENT STUDY PURPOSE



- Evaluate changes in physical or economic conditions that warrant modifications to the ship channel or port
- Analyze alternatives
- Make recommendations

La Quinta Section 1201 (23) of WRDA 2016

PROBLEMS AND OPPORTUNITIES

Problems

- Inefficient deep-draft vessel utilization of the channel
- Delays in transiting due to width and maneuverability issues
- Tug assist impacted by current channel width at bends
- Finding suitable Placement Areas/Beneficial Use sites

Opportunities

- Support regional and National economic growth
- Utilize dredged material beneficially
- Reduce shoaling in hot spots

MEASURES TO BE CONSIDERED

- Deepening existing channel
- Widening existing channel
- Modifications to junction of La Quinta channel and main channel

EXISTING CHANNEL



La Quinta Section 1201 (23) of WRDA 2016



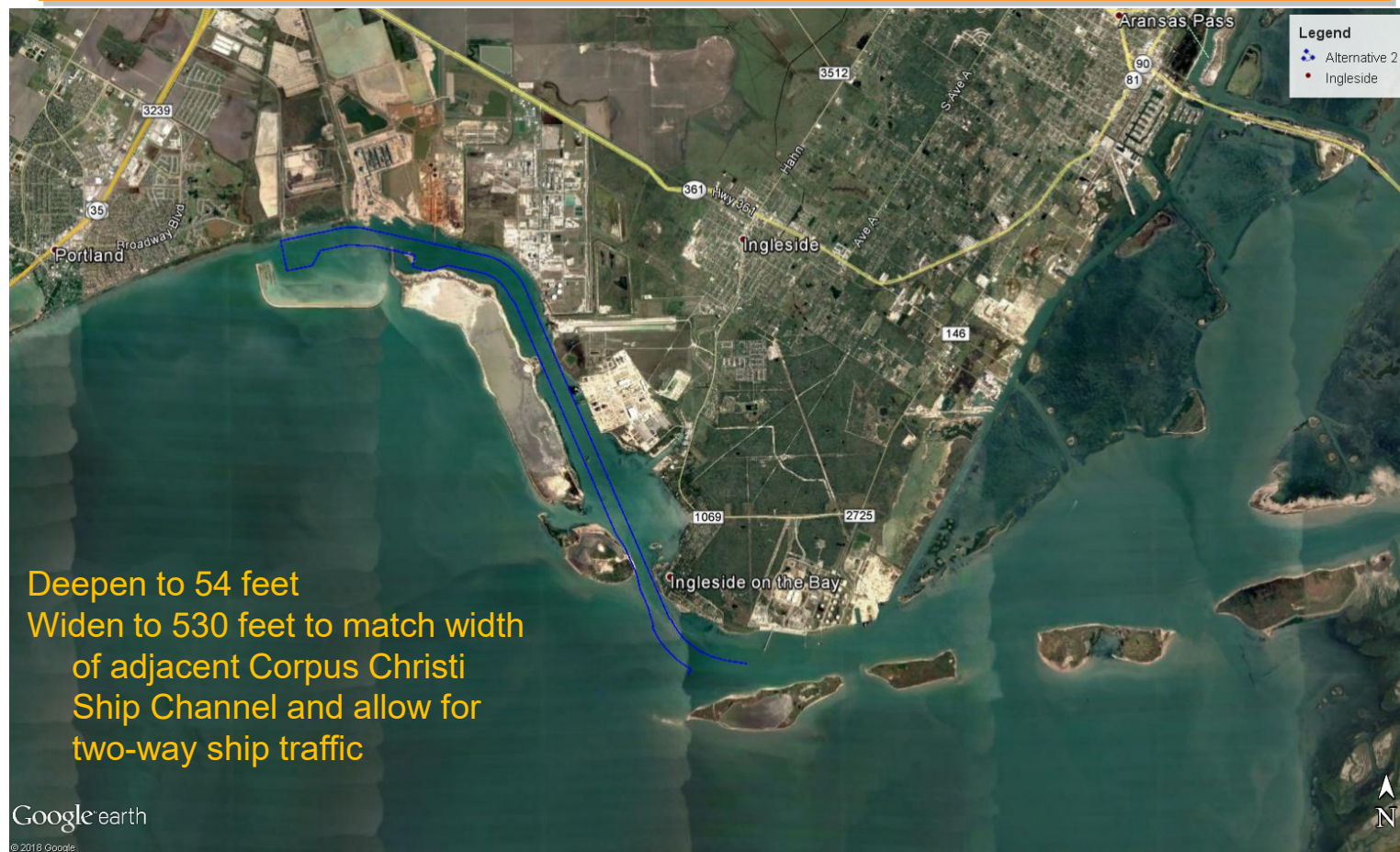
ALTERNATIVES 1A AND 1C



La Quinta Section 1201 (23) of WRDA 2016



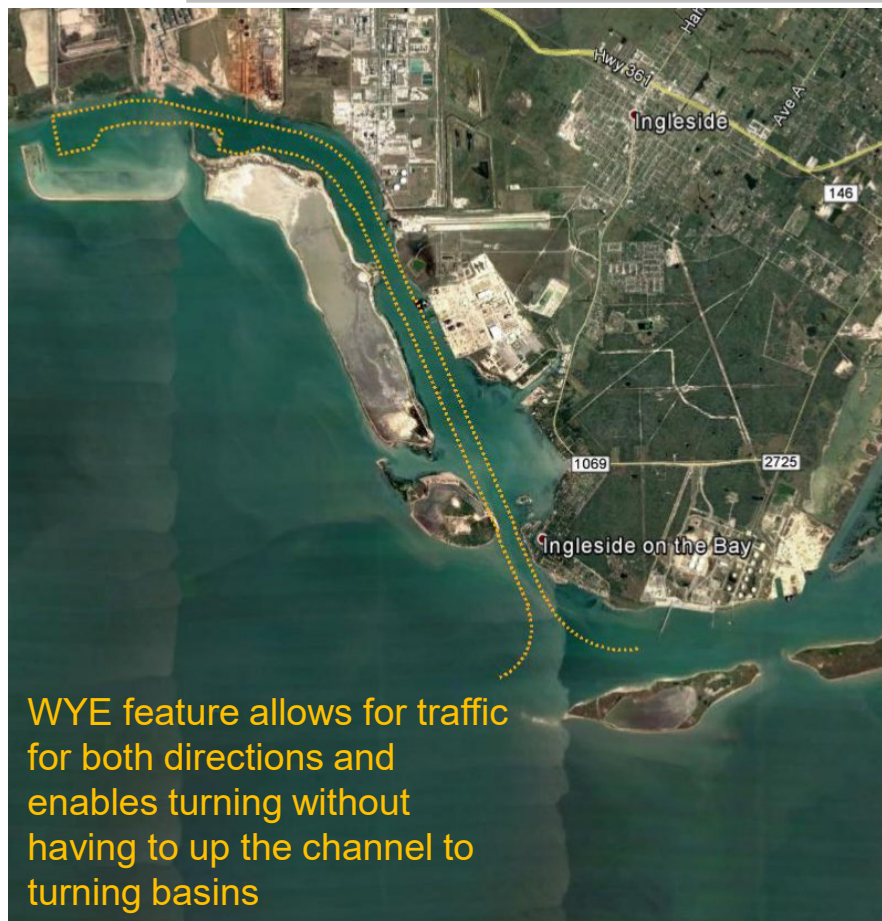
ALTERNATIVE 2



La Quinta Section 1201 (23) of WRDA 2016



ALTERNATIVES 3A AND 3B



La Quinta Section 1201 (23) of WRDA 2016



ALTERNATIVE 4



La Quinta Section 1201 (23) of WRDA 2016



DREDGED MATERIAL MANAGEMENT PLAN

- Develop plan for placement of dredged material
 - Existing in-bay placement areas
 - Existing beneficial use sites
 - Open bay placement
 - Shoreline stabilization
 - Seagrass restoration

ENVIRONMENTAL IMPACTS

- Seagrass beds
 - Along the channel
 - Next to potential placement areas
- Mitigation will be coordinated with resource agencies

FEASIBILITY STUDY SCHEDULE

Milestone		Date
Scoping	Execute FCSA with Port of Corpus Christi Authority	Sep 28, 2018
	Scoping Meeting	Jun 4, 2019
	Scoping Comments Accepted Through	Jul 3, 2019
Alternative Evaluation and Analysis	Alternatives Milestone	Jan 16, 2019
	Tentatively Selected Plan (TSP) Milestone	Oct 2019
	Draft Report for Reviews	Dec 2019
Feasibility Level Analysis	Agency Decision Milestone (ADM)	Apr 2020
	Feasibility Report Complete	Dec 2020
	S&A Review	Aug 2021
	Chief's Report	Sep 2021

HOW TO SUBMIT YOUR COMMENTS

- Submit tonight on form provided, or
- Mail or email to:
 - USACE – Galveston District
 - Attn: La Quinta Ship Channel Feasibility Study, CESWF-PEC-CC
 - P.O. Box 1229
 - Galveston, TX 77533-1229
 - CESWF-LaQuinta-Feasibility@usace.army.mil
- Date Due: Wednesday, July 3, 2019

STUDY TEAM IN ATTENDANCE

- Tom Hughes – Planning Supporter
- Nicholas Laskowski – Project Management
- Zach Rogers – Planning
- Nichole Schlund – Real Estate
- Harmon Brown – Environmental Resources
- Jennifer Bowers – Engineering
- Caitlin Bryant – Economics
- Dan Koesema – Port Representative

CORPUS CHRISTI SHIP CHANNEL, TEXAS LA QUINTA EXPANSION

Feasibility Study and Environmental Assessment



Initial Scoping Meeting
4 June 2019



**US Army
of Engineers**



PORT CORPUS CHRISTI



U.S. ARMY